

## Solar Street Light

**50W**

### specification

PRODUCT NAME :	50W all in two Solar Street Light
MODEL NO. :	NX-SSL3-050
SPECIFICATION :	DC 30V, 50W
WORKING TEMP :	-10~60(°C)
POWER FACTOR :	0.95
CRI(RA) :	>70
COLOR:	Dark gray
LIGHT SOURCE :	CREE 3030
LUMEN :	6000~7000LM
BEAM ANGLE :	75°~145°
PRODUCT SIZE :	542*239*85mm
CUTOUT	/
IP :	IP65
APPLICATION :	Highway, Garden, Factory, School
WARRANTY :	3 years
STANDARD :	ISO9001, ISO14001, ISO45001

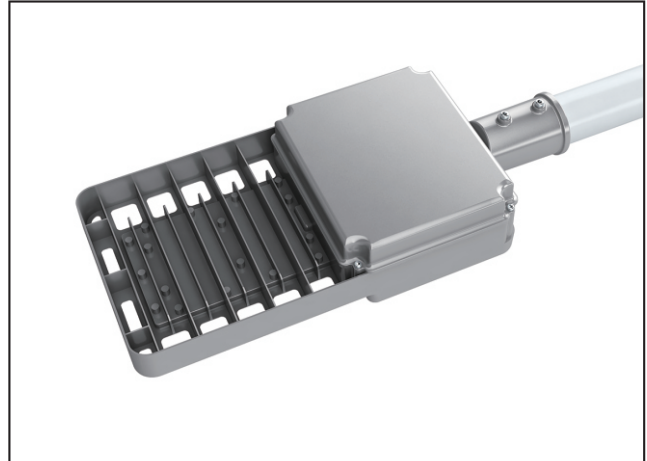
**Color Temperature:**

**6000K**

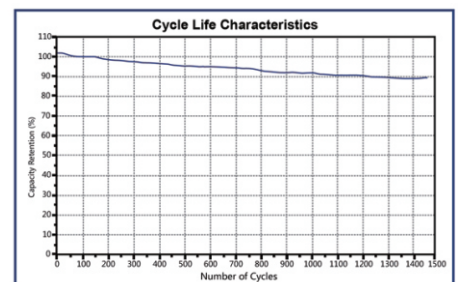
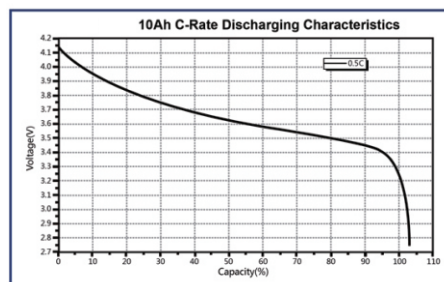
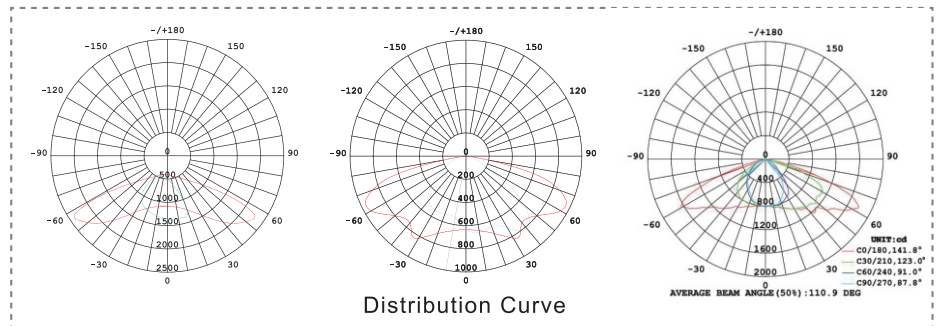
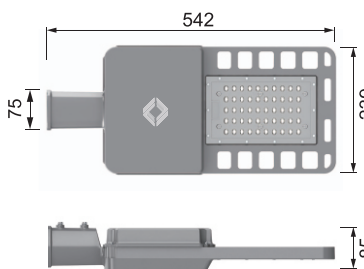


# Operation Instruction

## Rainy day king-A3



The lamp includes lithium battery energy storage control system and LED light source, so that the light source and the lithium battery energy storage are integrated into all in one solar lamp, which can be easily replaced. (IoT module optional)



Lithium battery performance graph

## Technical Parameter

LED lamp power(W)	LED	Chip qty	Battery cycle life	LED lifetime(h)	Input voltage(V)	Color temperature(K)	Protect level	Working temperature(°C)	Rainy days
20	Cree 3030	40 pcs	≥1200Times	≥50000	DC18~20	3000~6500	IP65	-10~+55	5~10
30									
40		60pcs							
50									

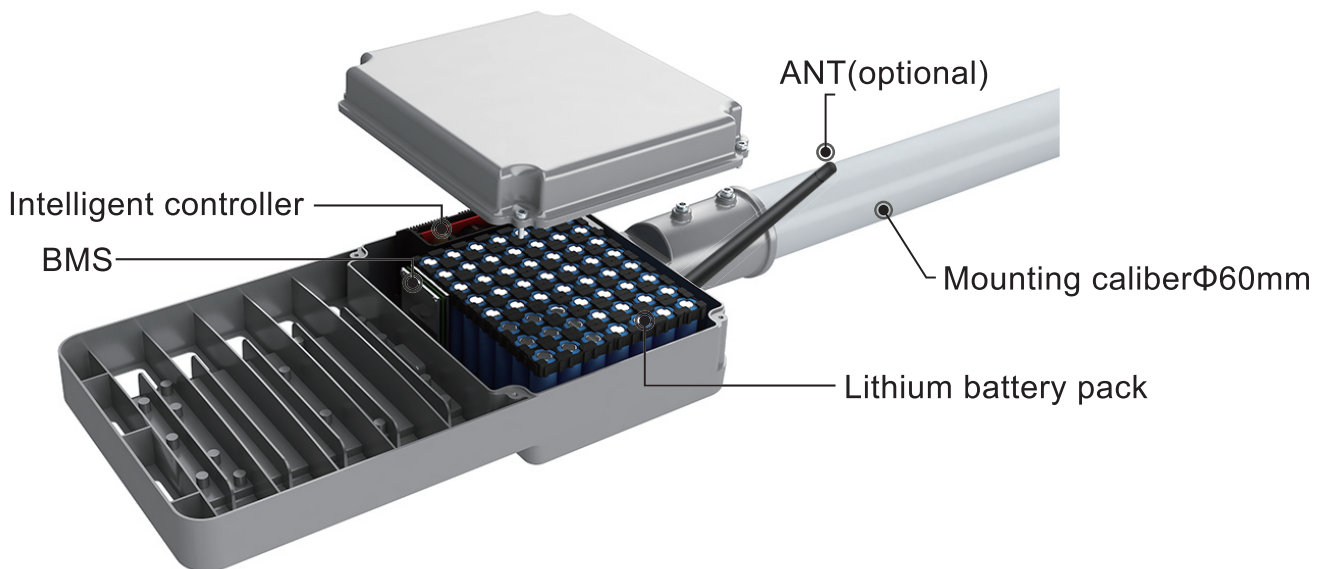
## Application

Mainly used in rural roads, secondary roads, factories, schools, gardens, various residential quarters, courtyard roads, etc.

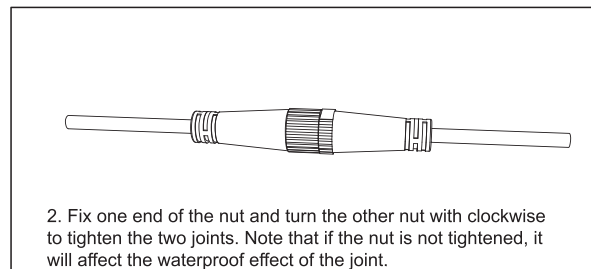
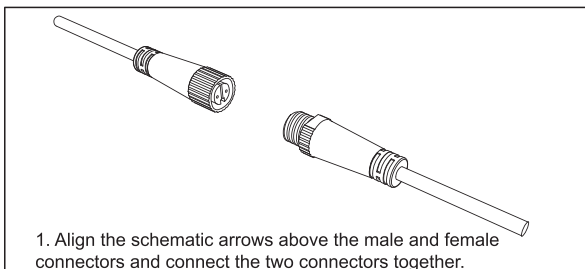
## Precautions

1. Please use the original solar panel (or according to the specification).
2. It is strictly forbidden to connect the product to the AC power supply directly.
3. It is strictly forbidden to use or store the product under high temperature environment above 60 °C.
4. It is strictly forbidden to transport this product by passenger car or passenger aircraft.
5. It is strictly forbidden to transport with flammable and explosive dangerous goods.
6. It is forbidden to hit or squeeze heavy objects (external forces).
7. It is strictly forbidden to disassemble the product shell or use the damaged product.
8. It is strictly forbidden to throw the product into fire, water or discard.
9. After charging and discharging with 2 days, you can enter the normal working mode.
10. The power cord connector must be insulated and waterproof.

## Structure



## Waterproof joint installation method



Blue color connects with PV negative, brown color connects with PV positive